

The Complete Guide to Hair Longevity

An evidence-based educational resource from Hair Longevity Institute — helping you understand the biology of your hair, recognize the early signs of change, and make informed decisions that protect and restore what matters most.

HAIR LONGEVITY INSTITUTE

PREMIUM CLINICAL RESOURCE

Why This Guide Matters

Hair loss is one of the most emotionally significant experiences a person can face — and yet it remains one of the most misunderstood. The vast majority of people who begin to notice thinning, shedding, or a change in hair texture will spend months — sometimes years — trying generic solutions before ever understanding what is actually happening beneath the surface of their scalp.

This guide exists because that gap between concern and clarity is costly. Not just financially, but biologically. The earlier you understand what is driving your hair changes, the more options remain available to you. Hair follicles that are actively miniaturizing can often be supported or stabilized. Follicles that have been dormant for years are a different clinical conversation entirely.

What you will find in the following pages is not a sales pitch, a wellness trend, or a collection of anecdotes. It is a carefully structured, medically grounded educational resource designed to give you the knowledge base that a well-informed patient deserves. We have written it in plain language — not because the science is simple, but because you should not need a medical degree to understand what is happening in your own body.

📄 This guide is intended for educational purposes. It does not constitute medical advice and should not replace a consultation with a qualified trichologist or dermatologist. Individual results and experiences vary significantly.

What This Guide Covers

We have organized this resource to follow the natural journey of someone who is beginning to notice changes in their hair — from initial concern to informed action. Each section builds on the last, so you can read from beginning to end or jump directly to the topic most relevant to you today.

01

The Science of Hair Growth

How your follicles work, what drives the hair cycle, and why biology is always the starting point.

02

Understanding Hair Loss Conditions

What different types of hair loss actually are, how to distinguish between them, and what causes each one.

03

Early Signs and Susceptibility

The red flags most people miss, who is most at risk, and why early recognition changes outcomes.

04

Stages and Progression

How hair loss typically progresses over time, including clinical staging frameworks used by specialists.

05

Assessment and Testing

What diagnostic tools and evaluations are actually useful — and which are often unnecessary.

06

What Actually Helps

Evidence-based interventions ranked by clinical credibility, with honest context around each one.

07

Your Action Plan

A practical, step-by-step framework for moving from concern to consistent, informed care.

The Biology of Hair: Science Explained Simply

Every strand of hair you can see is, in biological terms, already dead. It is a protein filament — primarily keratin — that has been extruded from a living structure beneath your scalp called the hair follicle. The follicle is where all meaningful biological activity occurs, and understanding its behavior is the foundation of understanding hair loss.

Each follicle operates on an independent cycle, moving through three distinct phases repeatedly throughout your lifetime. The **anagen phase** is the active growth phase, during which the follicle is metabolically active and producing a hair shaft. This phase lasts between two and seven years depending on your genetics, scalp health, and hormonal environment. The **catagen phase** is a brief transitional period lasting two to three weeks, during which the follicle shrinks and detaches from its blood supply. The **telogen phase** is a resting period of approximately three months, after which the follicle either re-enters anagen or, in the context of hair loss conditions, begins to miniaturize.

The Miniaturization Process

Miniaturization is the key mechanism in most androgenetic (pattern-related) hair loss. Under the influence of certain hormones — particularly dihydrotestosterone (DHT) — genetically susceptible follicles progressively shrink with each cycle. Each new hair produced is thinner, shorter, and lighter than the one before it. Eventually, the follicle may become so small that the hairs it produces are barely visible, creating the visual impression of a bare scalp even though the follicle is technically still present.

Why This Matters Clinically

The distinction between a miniaturized follicle and a truly absent follicle is clinically significant. A miniaturized follicle may still respond to treatment. An absent follicle — one replaced by scar tissue or fully fibrosed — cannot be regenerated with any currently approved intervention. This is why early identification and timely action are consistently emphasized in trichology practice.

At any given moment, approximately 85–90% of your scalp follicles are in the anagen phase, 1–2% in catagen, and 10–15% in telogen. Losing 50–100 hairs per day is considered within the normal range for a healthy adult. It is only when this ratio is disrupted — through hormonal shifts, nutritional deficiencies, systemic illness, or inflammation — that the balance tips toward visible thinning.

Understanding Hair Loss: What It Actually Is

The term "hair loss" is a broad umbrella that encompasses more than a dozen distinct clinical conditions. Using it as if it referred to a single phenomenon is one of the most common sources of confusion — and one of the reasons so many people pursue treatments that are entirely mismatched to their actual condition.



Androgenetic Alopecia (AGA)

The most common form of hair loss, affecting approximately 50% of men by age 50 and up to 40% of women by age 70. It is driven by a genetic sensitivity to androgens — particularly DHT — and follows a predictable, progressive pattern. In men, this typically presents as a receding hairline and crown thinning. In women, the presentation is more diffuse, most noticeably at the central part line.



Telogen Effluvium (TE)

A reactive, diffuse shedding condition triggered by a physiological stressor — surgery, illness, significant weight loss, nutritional deficiency, or psychological trauma. In TE, a large proportion of follicles are prematurely shifted into the telogen (resting) phase, resulting in widespread shedding two to four months after the triggering event. It is frequently confused with AGA, but is typically reversible once the trigger is resolved.



Alopecia Areata (AA)

An autoimmune condition in which the immune system mistakenly attacks hair follicles, typically producing circular patches of hair loss. It can affect the scalp, beard, eyebrows, and body hair. While it can be distressing, most cases of limited alopecia areata do resolve, though recurrence is common. More extensive forms — alopecia totalis and alopecia universalis — require specialist management.

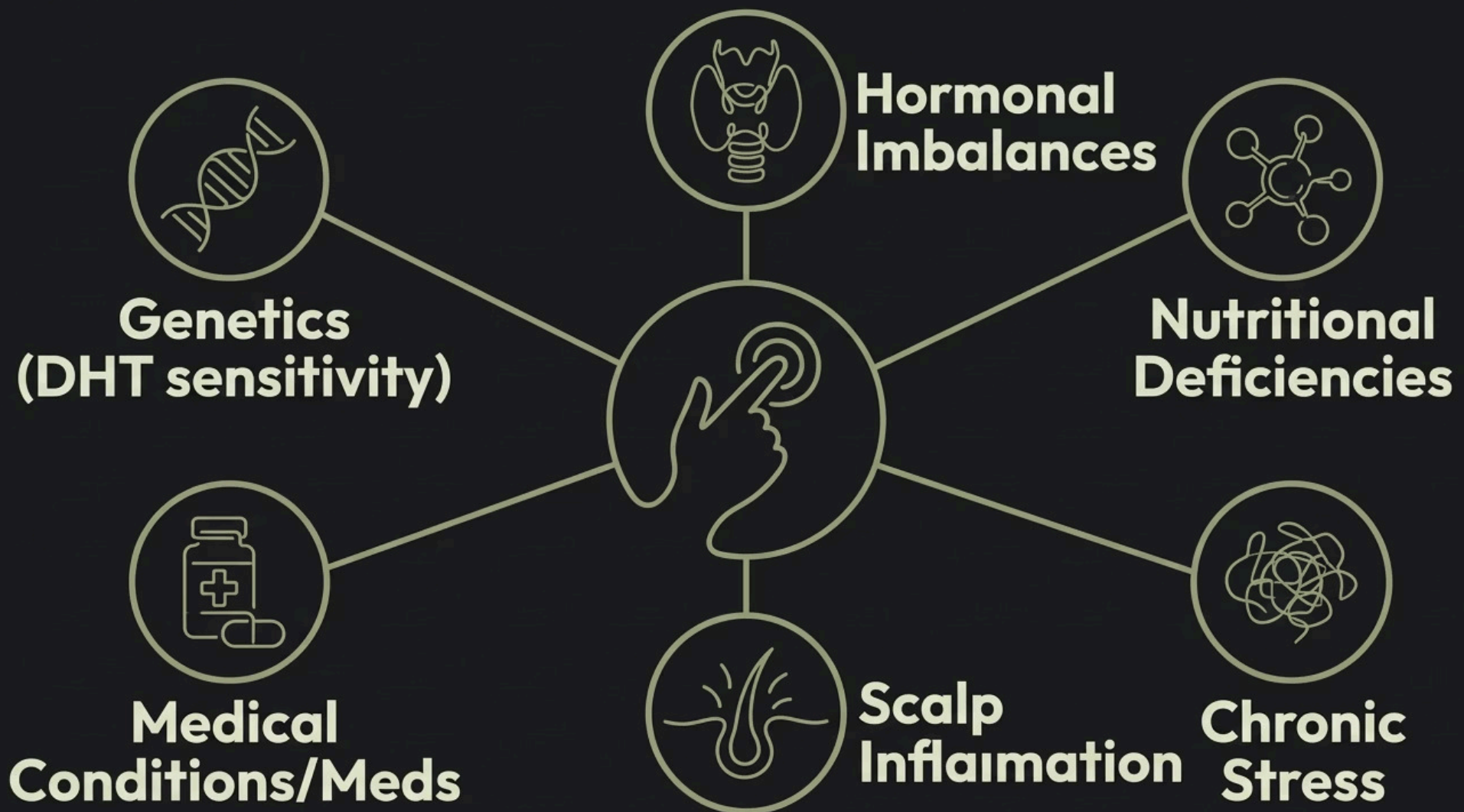


Scarring Alopecias

A group of less common but clinically serious conditions — including lichen planopilaris (LPL) and frontal fibrosing alopecia (FFA) — in which inflammation destroys the follicle and replaces it with scar tissue. These conditions require prompt diagnosis and specialist intervention, as the hair loss they cause is permanent. Scalp itching, burning, or tenderness alongside hairline recession are key red flags.

What Causes Hair Loss

Understanding the root causes of hair loss is essential — not because it satisfies intellectual curiosity, but because cause determines treatment. An intervention that works for one cause may be completely ineffective for another. This is why a proper assessment always precedes a treatment recommendation in responsible clinical practice.



It is worth noting that these causes rarely operate in complete isolation. A person with a genetic predisposition to androgenetic alopecia may experience significantly accelerated progression during a period of chronic stress or nutritional deficiency. A woman navigating perimenopause may find that hormonal shifts activate a latent genetic susceptibility that was previously well-compensated. This interplay between causes is one reason that effective treatment often requires addressing multiple factors simultaneously rather than seeking a single silver-bullet intervention.

- ❏ **A note on DHT:** Dihydrotestosterone is a potent androgen derived from testosterone via the enzyme 5-alpha reductase. It is the primary hormonal driver of androgenetic alopecia. Not everyone with elevated DHT loses hair — it is the genetic sensitivity of the follicle, not the DHT level alone, that determines susceptibility. This is why DHT-blocking strategies are effective for some individuals and less so for others.

Early Signs, Susceptibility, and Red Flags

One of the most important things to understand about hair loss is that by the time it becomes visually obvious to you — or to others — a significant biological process has already been underway for months or years. The scalp can lose up to 50% of its hair density before the change becomes apparent in the mirror. This is why learning to recognize early indicators is a genuine clinical advantage.

Early Signs to Watch For

- **Increased shedding on the pillow or in the shower** — particularly if sustained for more than 8 weeks
- **Widening of the center part** — a common early sign in women with diffuse androgenetic alopecia
- **Hairline recession at the temples or crown** — particularly in men, but increasingly recognized in women
- **Reduced hair density in ponytails or braids** — the circumference becomes noticeably thinner
- **Scalp visibility under direct light** — especially under overhead or fluorescent lighting
- **Shorter regrowth cycles** — hairs appear to stop growing at a shorter length than previously

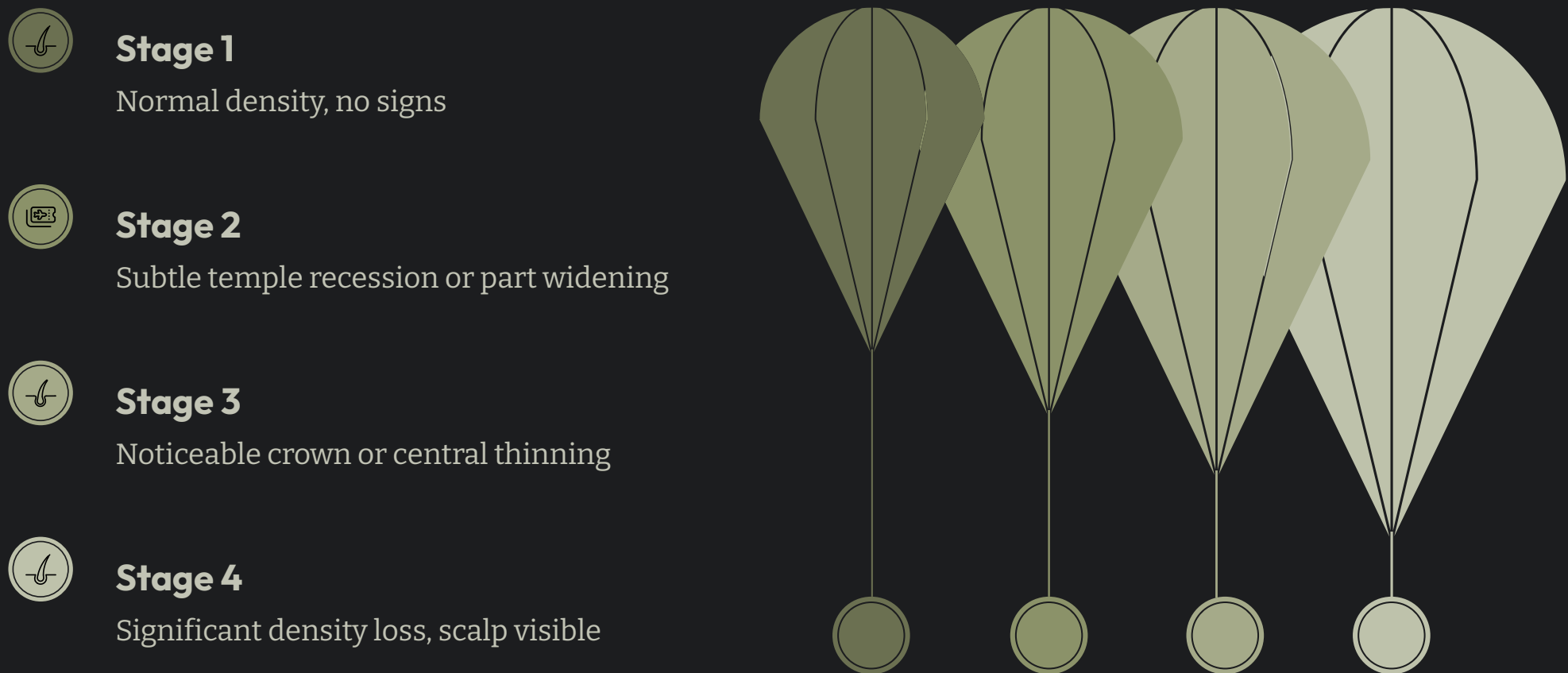
Who Is Most Susceptible?

- Individuals with a family history of hair loss on either the maternal or paternal side
- Women in perimenopause or postpartum recovery
- Anyone who has experienced significant physical or psychological stress within the past 6 months
- Individuals following restrictive dietary patterns, particularly those low in iron or protein
- People with diagnosed thyroid disorders or other hormonal conditions
- Individuals with chronic scalp conditions such as seborrheic dermatitis or psoriasis

- ☐ **Red Flag Symptoms Requiring Prompt Evaluation:** Scalp burning, tenderness, or itching accompanied by hairline recession; patchy hair loss appearing rapidly; complete loss of a section; eyebrow or eyelash involvement. These may indicate scarring alopecia or alopecia areata, both of which benefit significantly from early specialist assessment.

Stages and Progression: Understanding the Timeline

Hair loss conditions do not emerge overnight, and understanding their typical progression can help you contextualize where you are in that arc — and how much of the trajectory may still be influenceable. The two most widely used clinical staging systems are the Norwood Scale (for men) and the Ludwig Scale (for women).



This timeline is a general framework, not a fixed prediction. Progression speed varies enormously between individuals depending on genetic load, hormonal environment, nutritional status, stress burden, and whether any intervention has been introduced. Some individuals progress through all five stages over a decade. Others remain stable at Stage 2 for twenty years or more. The critical clinical insight is that earlier stages offer more options and better response rates to treatment than later stages.

Stage	Clinical Appearance	Intervention Opportunity
1-2	Subtle changes, early miniaturization detectable under trichoscopy	Highest — preventive and stabilizing strategies most effective here
3	Visible thinning at crown or part line, density reduction noticeable	Good — approved treatments can significantly slow or halt progression
4	Clear scalp visibility, significant density loss in affected zones	Moderate — combination approaches required, partial regrowth possible
5+	Advanced loss, large areas of visible scalp or hairline significantly receded	Limited — hair transplant evaluation becomes relevant, medical therapy still beneficial

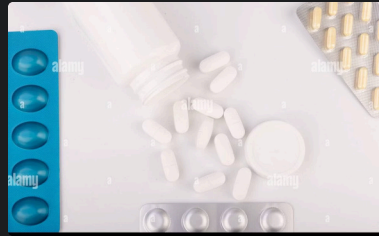
Is It Always Hair Loss? Ruling Out Other Causes

Not every change in hair density or texture represents a progressive hair loss condition. This is a nuance that is often overlooked in online resources, but it matters considerably for how you should respond. Jumping straight to hair loss treatments without first establishing the correct diagnosis is one of the most common and costly mistakes in this space.



Seasonal Shedding

Many individuals experience a predictable increase in shedding during autumn months, reflecting a natural biological shift in follicle cycling. This is typically self-limiting and resolves within six to ten weeks without intervention. If shedding follows a seasonal pattern and is not progressive, it rarely represents pathological hair loss.



Medication-Induced Shedding

A significant number of medications can trigger telogen effluvium as a side effect, including anticoagulants, antihypertensives, retinoids, and some hormonal contraceptives. If hair shedding began within three to four months of starting a new medication, this connection is worth discussing with your prescribing physician before pursuing hair-specific treatments.



Nutritional Deficiency Shedding

Low ferritin (iron stores), vitamin D deficiency, and inadequate protein intake are all well-documented contributors to diffuse hair shedding. In many cases, correcting the deficiency — through dietary change or supplementation — results in meaningful improvement within three to six months. This is not androgenetic alopecia, and treating it as such delays the most effective intervention.

- ❑ The clinical rule of thumb: if shedding is diffuse (all over), sudden in onset, and began after a clear trigger event — think reactive. If thinning is patterned, gradual, and has a family history — think androgenetic. When uncertain, a proper assessment is always the clearest path forward.

Testing and Assessment: What Actually Matters

A thorough, well-conducted clinical assessment is worth significantly more than a battery of self-ordered tests. Understanding which evaluations are genuinely informative — and which are commonly over-relied upon — helps you have a more productive conversation with any healthcare provider and ensures your resources are directed toward the most actionable information.

Trichoscopy

A non-invasive dermoscopic examination of the scalp and follicles using a specialized magnifying device. It allows a trained clinician to assess follicle density, miniaturization patterns, scalp inflammation, and the presence of fibrosis — providing a detailed picture of follicle health that is simply not visible to the naked eye. This is the most informative first-line assessment tool in modern trichology.

Blood Panel

A targeted blood panel can rule out systemic contributors to hair loss. Key markers include serum ferritin (ideally above 70 ng/mL for hair health), thyroid function (TSH, free T3, free T4), vitamin D, B12, zinc, and full blood count. Comprehensive hormonal panels — including DHEA-S, testosterone, and sex hormone-binding globulin — are particularly relevant for women with pattern concerns.

Standardized Photography

Clinical photography using standardized angles and lighting conditions provides an objective baseline for monitoring progression and treatment response over time. What looks unchanged in the mirror over six months can show measurable improvement — or measurable progression — in a standardized photographic comparison. This simple tool is consistently underused.

Scalp Biopsy

Reserved for cases where the diagnosis remains uncertain after clinical and laboratory evaluation, or where a scarring alopecia is suspected. A scalp punch biopsy examined by a dermatopathologist can definitively distinguish between inflammatory, autoimmune, and androgenetic causes. It is a minor procedure with minimal discomfort, but is not a routine first-line investigation.

One important note: many commercially available hair analysis tests — including hair mineral analysis and certain consumer genomic tests — have limited clinical validation and should not be the primary basis for treatment decisions. When in doubt, a consultation with a qualified trichologist or dermatologist is the most reliable investment you can make in an accurate diagnosis.

What Actually Helps: Evidence-Based Interventions

This section reflects the current state of clinical evidence as understood in the field of trichology. Interventions are grouped by level of evidence and type. It is important to note that effectiveness is always condition-specific — what works reliably for androgenetic alopecia may have no meaningful effect on telogen effluvium or alopecia areata.

Minoxidil (Topical and Oral)

Evidence level: Strong. Minoxidil is the most extensively studied topical agent for hair loss, with decades of clinical trial data supporting its use in both androgenetic alopecia and telogen effluvium. It works primarily by prolonging the anagen phase and increasing follicle size. The 5% topical formulation is approved for both men and women. Low-dose oral minoxidil (0.25–2.5mg daily) has emerged as a highly effective alternative with a more convenient regimen. Response is typically visible at 4–6 months, with peak effect at 12 months. Requires ongoing use to maintain benefit.

5-Alpha Reductase Inhibitors (Finasteride, Dutasteride)

Evidence level: Strong (in AGA). These prescription medications reduce DHT levels by inhibiting the enzyme responsible for its production. Finasteride (1mg daily) is FDA-approved for male androgenetic alopecia and has strong clinical evidence for halting progression and promoting regrowth in appropriately selected patients. Dutasteride has greater DHT suppression but is not FDA-approved for hair loss. Both are prescription-only and carry potential side effect profiles that require informed discussion with a prescribing physician. Use in women is limited to specific clinical contexts and requires specialist oversight.

Low-Level Laser Therapy (LLLT)

Evidence level: Moderate. FDA-cleared devices using laser or LED technology have demonstrated statistically significant improvements in hair density and thickness in multiple randomized controlled trials, particularly as an adjunct to other therapies. The mechanism involves photobiomodulation — using light energy to stimulate follicle metabolism and extend the anagen phase. Consistency of use is the primary determinant of response. Standalone LLLT is unlikely to match the efficacy of pharmaceutical interventions in moderate to advanced AGA.

Platelet-Rich Plasma (PRP)

Evidence level: Emerging-to-Moderate. PRP involves drawing a small volume of the patient's own blood, concentrating the platelet fraction (which is rich in growth factors), and injecting it into the scalp. The current evidence base includes numerous positive studies, but methodology varies considerably across trials, making definitive efficacy claims premature. In clinical practice, PRP is most commonly used as an adjunct to other treatments rather than a standalone solution. Results typically require three to four initial sessions followed by maintenance.

Nutritional Optimization

Evidence level: Strong for deficiency-driven hair loss. Correcting documented deficiencies in ferritin, vitamin D, zinc, and B12 can produce meaningful improvement in hair density for individuals whose shedding is nutritionally driven. For those without documented deficiencies, supplementation with additional nutrients beyond standard dietary intake has less robust evidence. Protein adequacy (minimum 1.2–1.6g per kg of body weight daily) is consistently underemphasized as a foundational element of follicle health.

What Does Not Help Enough on Its Own

An equally important part of a credible educational resource is honesty about the limitations of commonly promoted interventions. This is not to dismiss them entirely — some have supporting roles in a comprehensive strategy — but relying on any of the following as a primary treatment for significant hair loss is likely to lead to frustration and delayed progress.

Limited as Standalone Treatments

- **Biotin supplementation** — effective only if a genuine biotin deficiency exists (rare in well-nourished adults); no meaningful evidence for hair growth in the absence of deficiency
- **Scalp massages alone** — while some small studies suggest minor density improvements with daily vigorous massage, the effect size is insufficient as a sole intervention
- **Caffeine shampoos** — interesting mechanistic research exists, but clinical trial data supporting meaningful regrowth is limited
- **Essential oil blends** — rosemary oil has one comparative study with modest results; insufficient for moderate or advanced conditions
- **Collagen supplements** — support general skin and connective tissue health but have no direct evidence for reversing follicle miniaturization
- **Castor oil** — no clinical trial evidence to support hair regrowth claims; may cause product buildup and scalp issues with overuse

Why This Matters

The hair wellness market is estimated at over \$8 billion globally, and a significant proportion of those products are sold to people who are experiencing real, treatable hair loss conditions. This does not mean every product in this space is without value — but it does mean that the potential for well-intentioned, expensive, ineffective product accumulation is very real.

A useful rule of thumb: if an intervention is not discussed in peer-reviewed clinical literature as a primary treatment for your specific type of hair loss, approach it as a potential supportive adjunct at most — not a replacement for evidence-based care. The opportunity cost of delay in hair loss is not trivial.

- This is not a comprehensive list of ineffective products — it is a selection of the most commonly over-relied-upon interventions. Some individuals may experience supportive benefits from these approaches as part of a broader protocol.

When to Seek Professional Help

There is no single "right" moment at which someone should seek professional evaluation for their hair — but there are clear clinical indicators that suggest earlier action is warranted. The overarching principle: if you are concerned, the time to seek assessment is now, not after six more months of waiting to see if things improve on their own.



Seek Assessment Promptly

Scalp tenderness, burning, or itching alongside hair loss. Rapid or patchy hair loss appearing over weeks. Loss of eyebrow or eyelash density. Hairline recession that is clearly progressing month to month.



Schedule Within 1–3 Months

Persistent shedding lasting more than 8–12 weeks without a clear resolution. Visible thinning at the crown or part line that has worsened over the past year. A family history of significant hair loss and personal early indicators emerging.



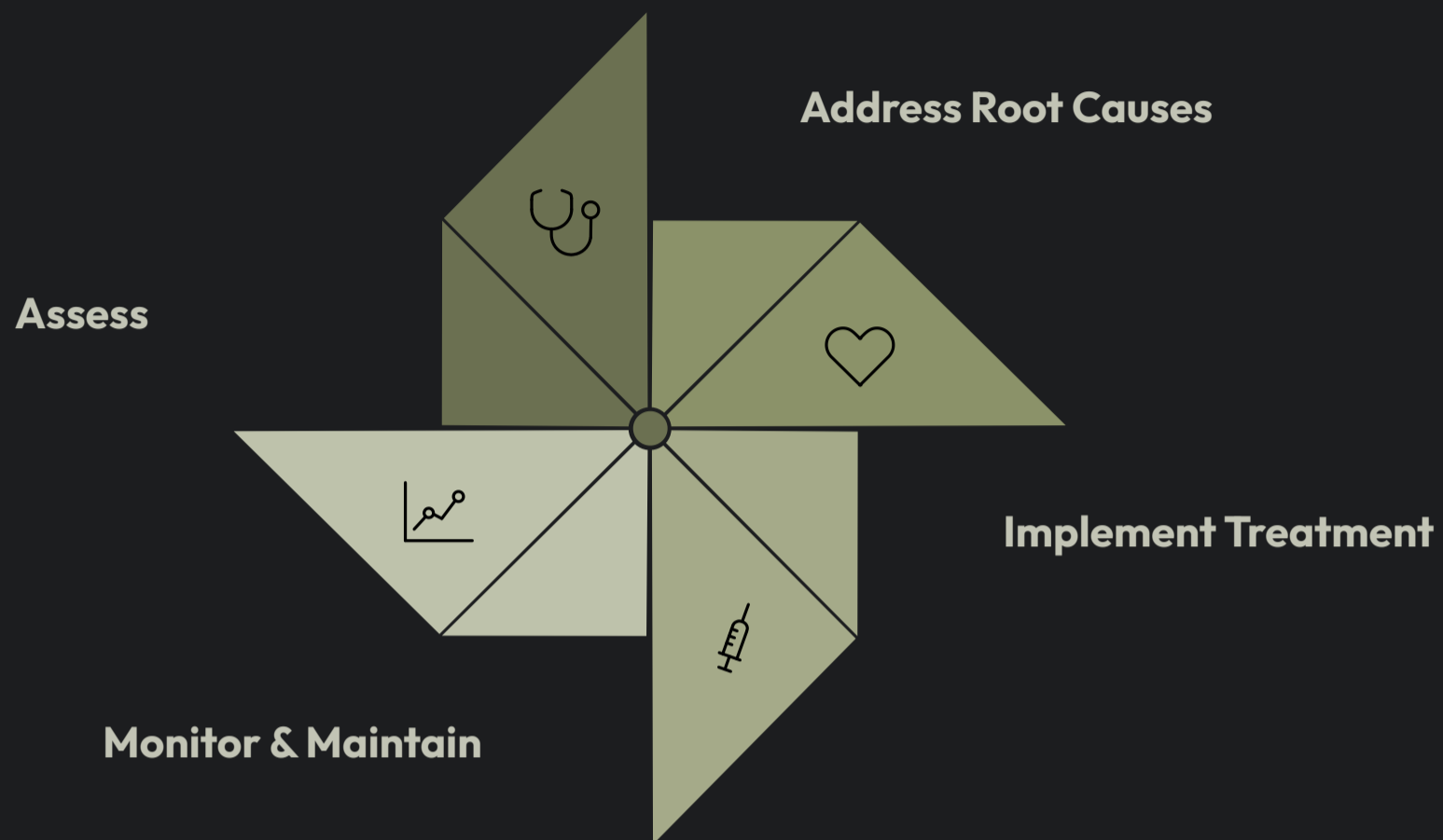
Seek Guidance When Uncertain

You have tried over-the-counter approaches for more than 6 months without improvement. You are unsure whether what you are experiencing is normal shedding or a progressive condition. You want to establish a baseline before changes become more significant.

A professional assessment from a qualified trichologist or dermatologist will typically include a scalp examination, detailed history taking, and targeted investigation recommendations. It should also include an honest conversation about realistic outcomes — which, in our clinical experience, is something most people appreciate far more than optimistic promises. Understanding your actual situation — even if it is not what you hoped — is the necessary foundation for any meaningful plan.

Your Practical Action Plan

Knowledge without a clear next step has limited value. The following action framework is designed to help you translate what you have learned in this guide into concrete, prioritized actions — regardless of where you are in your hair health journey right now.



The most important principle embedded in this framework is sequencing. Many people jump directly to Phase 3 — trying treatments — without having completed Phase 1. This leads to the common experience of "trying everything" without meaningful results, because the treatments selected may not match the underlying cause. Assessment first is not a bureaucratic formality — it is a clinical necessity.

Timeframe	Priority Actions	What You Are Trying to Achieve
Week 1–2	Book a trichologist or dermatologist appointment; request targeted blood panel from your GP	Establish diagnosis and baseline
Month 1	Review results; begin addressing any identified deficiencies; establish photographic monitoring	Rule out and correct systemic contributors
Month 1–3	Begin prescribed or recommended evidence-based treatment protocol; optimize diet and stress management	Initiate follicle-level intervention
Month 3–6	First clinical review and photographic comparison; assess response and tolerability	Confirm protocol is appropriate; adjust if needed
Month 6–12	Continue protocol consistently; second clinical review; assess regrowth or stabilization	Document measurable response; reinforce long-term plan
Ongoing	Maintain treatment; annual or biannual reviews; adjust as life stage changes	Protect and preserve achieved results

Real Experiences: What Progress Actually Looks Like

The following composite examples are drawn from patterns commonly seen in trichology practice. They are not individual case studies and do not represent any specific patient. They are offered as a grounding illustration of what the journey from concern to improvement can realistically look like — and what it requires.

The Early Identifier

"I noticed my part was getting wider in my late 20s. My mother had significant hair loss by her 50s, so I decided not to wait. A trichoscopy confirmed early androgenetic alopecia with significant miniaturization. We started low-dose oral minoxidil and I addressed a ferritin deficiency that had been sitting undetected for years. Twelve months later, the density at my part line has clearly improved and the shedding has reduced considerably. I feel like I got ahead of something that could have been much harder to manage later."

— *Composite experience reflecting early-stage AGA with nutritional cofactor*

The Post-Trigger Recovery

"I lost a significant amount of hair in the months after a difficult pregnancy. I was convinced something was permanently wrong. My trichologist explained telogen effluvium and the normal post-partum physiology. We optimized my iron and protein intake, and I was told — honestly — that most of the density would return on its own within 6–12 months. It took about 9 months, but it did return almost entirely. Having that explanation and a realistic timeline made an enormous psychological difference."

— *Composite experience reflecting postpartum telogen effluvium*

The Later Presenter

"I waited longer than I should have. By the time I sought assessment, I was at Stage 4. It was harder to hear, but I appreciated that I was given an honest picture rather than false reassurance. We began a combination protocol — topical and oral interventions alongside PRP — and while I haven't recovered what I lost in the earlier years, the progression has stopped and there has been some improvement in texture and density. I wish I had come sooner. But I'm glad I came."

— *Composite experience reflecting moderate-to-advanced AGA with combination management*

Key Takeaways

If you take nothing else from this guide, let it be the following principles. They represent the distilled clinical wisdom most likely to make a meaningful difference in your hair health outcomes.

1 **Diagnosis Before Treatment**

The single most important step you can take is identifying what type of hair loss you are experiencing before choosing how to respond. Misdiagnosed hair loss is undertreated hair loss. An accurate clinical assessment changes everything that follows.

2 **Earlier Is Meaningfully Better**

Hair follicles respond better to intervention when they are still active than when they have been dormant for years. The window of highest efficacy is earlier in the progression than most people realize when they first seek help.

3 **Biology, Not Products, Drives Results**

The most effective interventions work by engaging with the underlying biology of follicle cycling and miniaturization. Products that do not address these mechanisms — however elegantly marketed — cannot substitute for treatments that do.

4 **Consistency Over Intensity**

Hair loss treatment is a long-term commitment, not an acute intervention. Consistent, sustained use of an appropriate treatment protocol outperforms high-intensity, short-duration approaches every time. Expect to measure results in months and years, not weeks.

5 **Root Causes Must Be Addressed**

No topical or pharmaceutical treatment will fully compensate for an untreated hormonal imbalance, a severe iron deficiency, or a chronically inflamed scalp environment. A comprehensive approach that addresses systemic contributors alongside follicle-specific treatment consistently outperforms partial protocols.

Frequently Asked Questions

The following questions reflect the concerns most commonly raised in clinical consultations. They are answered with the same directness and nuance that we bring to in-person assessments.



How do I know if my shedding is normal?

Losing 50–100 hairs per day is within the normal range for a healthy adult. Shedding that significantly exceeds this, persists beyond 8–12 weeks, or is accompanied by visible thinning warrants clinical evaluation. An easy self-check: if you notice dramatically more hair than usual on your pillow, in the shower drain, or on your hairbrush over a sustained period, it is worth investigating.



Will my hair grow back on its own?

It depends entirely on the cause. Telogen effluvium following a resolved trigger typically does recover substantially without treatment. Androgenetic alopecia does not reverse spontaneously and will generally progress without intervention. Alopecia areata can resolve and recur unpredictably. This is why diagnosis is essential – the answer to this question varies completely depending on what you are actually experiencing.



Are hair supplements worth taking?

If a deficiency exists – yes, correcting it can produce meaningful improvement. If no deficiency is present, most supplements add little beyond what a nutritionally adequate diet already provides. The exception is a high-quality, evidence-formulated supplement designed to support follicle health broadly – but these should be viewed as supportive tools within a comprehensive protocol, not primary treatments.



How long does treatment take to show results?

Most evidence-based treatments require a minimum of 4–6 months before visible improvement is apparent. This is because the hair growth cycle itself takes 3–4 months just to produce visible shaft growth. Patients who discontinue treatment at the 2–3 month mark because they have not seen improvement often abandon a protocol that was beginning to work. Sustained commitment to the 12-month mark is the standard benchmark for meaningful efficacy assessment.



Is hair loss hereditary? If my parent has it, will I?

Genetic susceptibility plays a significant role in androgenetic alopecia and is inherited from both parents – not, as commonly believed, exclusively from the maternal line. However, genetics describes probability, not certainty. Having a strong family history of hair loss significantly increases your risk, but does not guarantee your experience will mirror theirs. Managing modifiable contributors – hormonal health, nutrition, scalp care, stress – can meaningfully influence how genetic susceptibility expresses.



Can stress really cause hair loss?

Yes – this is one of the more robustly supported connections in trichology. Significant acute stress can trigger telogen effluvium through cortisol-mediated disruption of the hair cycle. Chronic low-grade stress may contribute to a suboptimal follicle environment over time. Managing stress is not a soft recommendation – it is a biologically grounded component of any serious hair health strategy.

How Hair Longevity Institute Can Help

HAIR LONGEVITY INSTITUTE

Hair Longevity Institute was built on a straightforward conviction: that people experiencing hair changes deserve access to genuinely expert, evidence-based clinical care — delivered with the clarity, honesty, and respect that a medically significant concern warrants. We are not a product company dressed in clinical language. We are a specialist trichology platform designed to translate the best available science into practical, individualized care.

What We Offer

Comprehensive Trichology Assessments

In-depth consultations including trichoscopic scalp analysis, detailed clinical history, and personalized investigation recommendations. Every assessment results in a clear diagnosis and a written clinical summary you can refer back to and share with other providers.

Evidence-Based Treatment Protocols

Individualized treatment plans built around your specific diagnosis, stage, and lifestyle context — using only interventions with credible clinical evidence. We explain the rationale behind every recommendation and set realistic expectations before you commit to any protocol.

Ongoing Monitoring and Support

Structured follow-up assessments at 3, 6, and 12 months, using standardized photography and clinical tracking. Your protocol is reviewed and adjusted based on your individual response — because treatment is not a one-size-fits-all event, it is an evolving clinical relationship.

Educational Resources

Premium guides, evidence summaries, and clinical explainers — like this one — designed to ensure that every person who comes to us for care arrives informed, empowered, and ready to make decisions with confidence.

Our Clinical Philosophy

We do not promise outcomes we cannot deliver. We do not recommend treatments whose evidence base does not support them. We do not rush assessments or offer generic protocols to people who deserve individualized care.

What we do promise is this: you will leave every interaction with us knowing more than you did when you arrived — and with a clear, clinically grounded path forward that is honest about what it requires and realistic about what it can achieve.

Hair loss is a medical concern. It deserves medical-grade thinking. That is what we are here to provide.

To book your initial assessment or to speak with one of our clinical team, visit us at Hair Longevity Institute.

❏ This guide is provided as a complimentary educational resource by Hair Longevity Institute. It is intended for informational purposes only and does not constitute personalized medical advice. Please consult a qualified trichologist or dermatologist for assessment and treatment recommendations specific to your situation.